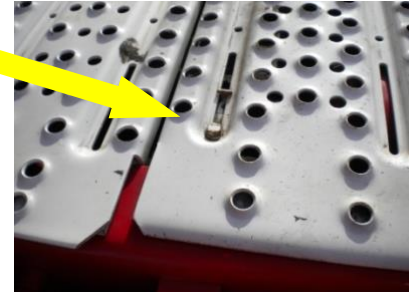


## PROCEDURE FOR REPLACING SHEER PINS

### Engine off, Handbrake on !

- Loosen bolts from cover plate behind cab.



- Remove cover plate.

- Locate universal coupling with broken shear pins, near to blower on drivers side.



- There are 3 pins, each with 2 Allen screws.  
Remove screws and broken pin using Allen key from the lorry's toolkit.



- Replace shear pin and tighten screw.
- Turn drive shaft to locate next pin and repeat the operation two more times.
- Replace cover and tighten bolts
- This procedure can also be done from beneath the vehicle